

# Making Tracks

The official publication of the Anchorage Snowmobile Club

Season 2011-2012, Issue 1

Oct/Nov 2011



## The Summit

A message from your club President



Well it's time to say good bye to "The Summit". It never made sense to change it to "The M8" when I got the new sled. I'll be passing the reigns to Pat for the remainder of the season. I hope to have more time to enjoy the club and all the friends I've made over the years. After 11 years on the board and 3 ½ years at the helm it's time to throttle back a little. I plan to stay on the board of directors and continue attending the meetings but with a little less presence. Thank you for the opportunity to serve, and thank you for allowing me to take my turn at the wheel.

Please help me welcome Pat Kuckertz back into the office of Anchorage Snowmobile Club President, Pat is an experienced member of the board and I'm confident he'll continue to do a great job.

See you on the trail or at a meeting,

Gary Brown  
Seat 3A Board Member  
Anchorage Snowmobile Club

I want to extend a very big thanks to Gary for his service and dedication to the club. I have some very big shoes to fill. (Size 12 I think) I am looking forward this season. We have some exciting rides coming up.

I hope to see everyone out on the snow this winter.

Pat Kuckertz  
President Anchorage Snowmobile Club

**Make New Friends,  
Join Anchorage Snowmobile Club  
You'll Never Ride Alone**

Anchorage Snowmobile Club  
POB 232196  
Anchorage, AK 99523

**Call the HOTLINE!**

**(907)566-0272**

[www.anchoragesnowmobileclub.com](http://www.anchoragesnowmobileclub.com)

**AGAIN THIS YEAR,**  
BRP AND THE SKI-DOO® DEALERS ARE PROUD TO PRESENT:

club support  
**MILLION\$**  
ski-doo 2011



After having given more than \$2,000,000 to snowmobile clubs in the past years through this program, BRP will continue its pledge to snowmobile clubs' volunteers and their trails for the 2011-2012 snowmobile season. For each snowmobiler who fills out and drops off a coupon at a Ski-Doo dealership of their choice between September 1, 2011 and November 15, 2011, BRP and its dealers will donate \$10 cash to the member's club. It's that simple! Each snowmobile club is eligible for a total Ski-Doo donation of up to \$1,500 in cash (150 members X \$10 = \$1,500) paid directly to clubs by BRP and the Ski-Doo dealers, upon program completion.

HURRY. HEAD TO SKI-DOO.COM AND SIGN UP TO RECEIVE YOUR EXCLUSIVE OFFER AND \$10 DONATION COUPON. SIMPLY DROP OFF YOUR COUPON AT YOUR NEAREST SKI-DOO DEALER. YOUR CLUB WILL THANK YOU FOR IT!

ski-doo

[www.anchoragesnowmobileclub.com](http://www.anchoragesnowmobileclub.com)



### The Anchorage Snowmobile Club

ASC was formed as a non profit corporation in 1991 to support Anchorage snowmobilers interested in having more places to ride and better snowmobile access. ASC promotes the sport of snowmobiling with the primary objectives being family recreation and pleasure. ASC works for fair and equitable access regulations, the development of trails and related issues, and "Safety First" including "Zero Tolerance" in all winter sports.



### Officers and Board of Directors

The ASC Board of Directors is composed of 17 positions, four officers and 13 board members. The Board is generally responsible for making decisions regarding funding of the club, access issues, club rides and events, and sharing additional club duties as required.

**President:** Pat Kuckertz

**Vice President:** Erik Burney

**Recorder:** Jerry Siok

**Treasurer:** Nancy Grieco

**Board:** Robert Homer, Mike Jacquot, Gloria Scarbrough, Ed Morrison, Gary Brown, Jack Grieco, Mike McMillan, Tim Cook, Rich Zitzow & Leon Sutton

### Making Tracks

Making tracks is the official publication of the Anchorage Snowmobile Club (ASC) and is published September thru April, eight issues. ASC offers its business and individual members the opportunity to advertise in making tracks. A business card ad, usually an *image* of your business card, is \$35 for the season, a half page ad is \$35 per newsletter and a full page ad is \$70 per newsletter. If you would like to advertise in **Making Tracks**, then contact Robert Homer at [Newsletter@AnchorageSnowmobileClub.com](mailto:Newsletter@AnchorageSnowmobileClub.com) or [Info@anchoragesnowmobileclub.com](mailto:Info@anchoragesnowmobileclub.com)  
**Anchorage Snowmobile Club**  
**P.O. Box 232196**  
**Anchorage, AK 99523-2196**  
**ASC Hotline 566-0272**

# To go or not to go...

By Robert Homer, ASC Newsletter Editor and Board Member

When is it time to ride? When the snow flies...right? Perhaps that's so.

However, I've been having this discussion over a few sessions of sled prep and the statement of a few of my buddies – "my sled is ready to go" only needs a quick check of fluids and lets ride! Somehow that turns into 5 hours of "when did I need that part?" and "I don't remember it looking like that before?" Thus the reason we have a sled prep. But the sled tune up and the camaraderie is part one of the equation... the other...snow!

Actually a bit more than snow...some trail prep, cold temps to get the open water to freeze up and oh yeah, those pesky parts you may be in need of if you are the early rider and find that stump, rock, or worse yet open water.

I'm sure our parts suppliers don't want me telling you to be cautious but in reality they would like you around for the long haul so the idea is to be safe not sorry. Besides if you have a sled prep with your riding crew, or new friends - perhaps from a club meeting or one of the great tune up seminars we've had this year... you've probably got the right time and opportunity to buy those parts in the proper method vs. creating a pull toy (or worse) when you venture out for that first ride of the season.

So... to go or not to go? I'm thinking go! Now the challenge to find that all important parking spot...



# ASC Appreciates Our Business Members

<p><b>NEW</b> <b>AAA Fence</b> 1621 E 82nd Ave Anchorage, AK 99507 907-349-7000 <a href="http://www.aaafenceak.com">www.aaafenceak.com</a></p>	<p><b>NEW</b> <b>Accupoint - The GPS Store</b> 7125 Old Seward Highway Anchorage, AK 99518 522-1600 <a href="http://www.accupoint.com">www.accupoint.com</a></p>	<p><b>Dr Gregory Grubba DDS</b> 4200 Lake Otis Parkway Anchorage, AK 99508 562-1958 <a href="http://www.drgrubba.com">www.drgrubba.com</a></p>	<p><b>NEW</b> <b>Iron Dog, Inc.</b> 7100 Old Seward Highway #C Anchorage, AK 99518 563-4414 <a href="http://irondog.org">http://irondog.org</a></p>
<p><b>Alaska Mining and Diving Supply</b> 3222 Commercial Drive Anchorage, AK 99501 277-1741 <a href="http://www.akmining.com">www.akmining.com</a></p>	<p><b>Alaska Snow Cat</b> PO Box 13355 Trapper Creek, Alaska 99683 907-733-1566</p>	<p><b>Luce's Lodge</b> PO Box 1050 Willow, AK 99688</p>	<p><b>Mt View Car Wash</b> 124 Taylor ST Anchorage, AK 99508 279-4819 <a href="http://www.mtviewcarwash.com">www.mtviewcarwash.com</a></p>
<p><b>Alaska Snowmobile Salvage</b> 1300 E. 74th AVE. Anchorage, AK 99518 349-8594</p>	<p><b>Alpine Creek Lodge</b> PO Box 121 Cantwell, AK 99729 907-743-0565 <a href="http://www.alpinecreeklodge.com">www.alpinecreeklodge.com</a></p>	<p><b>McKinley View Real Estate</b> PO Box 1107 Talkeetna, AK 99676 907-733-3300 <a href="http://www.mckinleyview.com">www.mckinleyview.com</a></p>	<p><b>Marita Sea &amp; Ski</b> 1340 Rudakof Circle Anchorage, AK 99508 337-2744 <a href="http://www.alaskapowersports.com">www.alaskapowersports.com</a></p>
<p><b>NEW</b> <b>Amber Lake Rentals</b> 2551 La Honda rive Anchorage, AK 99517 907-227-7030 <a href="http://www.homeaway.com/vacation-rental/p272069#rates-bar">www.homeaway.com/vacation-rental/p272069#rates-bar</a></p>	<p><b>Anchorage Suzuki Arctic Cat</b> 3054 Commercial Dr Anchorage, AK 99501 272-2412 <a href="http://www.anchoragesuzukiarticcat.com">www.anchoragesuzukiarticcat.com</a></p>	<p><b>Your Business Link could go here Join Today</b></p>	<p><b>NEW</b> <b>S and P Certified Car Care</b> 12711 Old Glenn Hwy Eagle River, AK 99577 696-6951 <a href="http://www.spcertifiedcarcare.com">www.spcertifiedcarcare.com</a></p>
<p><b>Bentalit Lodge</b> PO Box 52 Skwentna, AK 99667 907-733-2716 <a href="http://www.bentalitlodge.com">www.bentalitlodge.com</a></p>	<p><b>Your Business Link could go here Join Today</b></p>	<p><b>NEW</b> <b>Signco</b> 2480-A Commercial Drive Anchorage, AK 99501 338-7446 <a href="http://www.signcoalaska.com">www.signcoalaska.com</a></p>	<p><b>Sheep Mountain Lodge</b> 17701 West Glenn Highway Sutton, AK 99674 877-945-5121 <a href="http://www.sheepmountain.com">www.sheepmountain.com</a></p>
<p><b>Cantwell Lodge</b> PO Box 87 Cantwell, AK 99729 907-733-2716 <a href="http://www.cantwelllodgeak.com">www.cantwelllodgeak.com</a></p>	<p><b>Coca Cola of Alaska</b> 128 W 1st Ave Anchorage, AK 99501 272-8511 <a href="http://www.thecocacolacompany.com">www.thecocacolacompany.com</a></p>	<p><b>NEW</b> <b>Spruce Moose Chalets</b> 2708 West 65th Ave Anchorage, AK 99502 907-677-7543 <a href="http://www.sprucemoosealaska.com">www.sprucemoosealaska.com</a></p>	<p><b>Susitna River Lodge</b> PO Box 786 Talkeetna, AK 99676 907-733-0505 <a href="http://www.susitna-river-lodging.com">www.susitna-river-lodging.com</a></p>
<p><b>Denali Federal Credit Union</b> 3400 LaTouche Anchorage, AK 99508 257-7200 <a href="http://www.denalifcu.org">www.denalifcu.org</a></p>	<p><b>Deshka Landing Outdoors Assoc.</b> PO Box 155 Willow, AK 99688 907-495-3374 <a href="http://www.deshkalanding.com">www.deshkalanding.com</a></p>	<p><b>Team CC Inc.</b> 13140 Iris Way Eagle River AK 99577 694-3200 <a href="http://www.teamcc.com">www.teamcc.com</a></p>	<p><b>NEW</b> <b>Tonsina River Lodge</b> Mile 79 Richardson Highway Copper Center, AK 99573 907-822-3000 <a href="http://www.tonsinariverlodge.com">www.tonsinariverlodge.com</a></p>
<p><b>Glacier City Snowmobile Tours</b> PO Box 1018 Girdwood, AK 99587 907-783-5566 <a href="http://www.snowtours.net">www.snowtours.net</a></p>	<p><b>Go Pro</b> 230 E. Potter Drive Anchorage, AK 99518 563-1799 <a href="http://www.goproalaska.com">www.goproalaska.com</a></p>	<p><b>NEW</b> <b>Trapper Creek Inn and RV Park</b> PO Box 13209 Trapper Creek, AK 907-733-2302 <a href="http://www.trappercrkinn.com">www.trappercrkinn.com</a></p>	<p><b>NEW</b> <b>Trek Over The Top</b> Box 389 Dawson City, Yukon 867-993-5575 <a href="http://www.trekoverthetop.com">www.trekoverthetop.com</a></p>
<p><b>Your Business Link could go here Join Today</b></p>	<p><b>Your Business Link could go here Join Today</b></p>	<p><b>Ron Webb Paving &amp; Snow Removal, Inc</b> PO Box 230228 Anchorage, AK 99523 349-3724 <a href="http://www.ronwebbpaving.com">www.ronwebbpaving.com</a></p>	<p><b>White Spruce Trailers</b> 7201 Brayton Dr Anchorage, AK 99507 562-6905 <a href="http://www.whitespruce.com">www.whitespruce.com</a></p>



**DESHKA LANDING • WILLOW, ALASKA**  
THE REGION'S PREMIER LAUNCHING SPOT TO OUTDOOR FUN!

Deshka Landing Outdoor Association, LLC  
DLOAManager@hotmail.com  
P.O. Box 155 | Willow | AK 99688 | 907-495-3374 | www.deshkalanding.com



**ACCUPOINT INC.**  
RENTAL • SALES • REPAIR • TRAINING

- GPS
- LASERS
- SCANNERS
- MACHINE CONTROL
- SURVEY EQUIPMENT

**Jerry Kokko**  
Retail Operations Manager  
jerry@accupoint.com

7125 Old Seward Hwy., Suite 100 • Anchorage, AK 99518-2282  
Phone: 907-522-1600 • Fax: 907-522-1640  
Toll-Free: 888-280-7110 • Direct: 907-771-3604 • http://www.accupoint.com

# Business Member Spotlight



SKIDOO/BRP Inc and AMDS!

ASC was the recipient of \$1,500 from the Ski-Doo Million Dollar club support program. Thanks to new and existing ASC members and the great work put forth by AMDS and ASC board members to achieve this feat two years in a row and obtain an award from BRP to support snowmobiling and club programs. But that's not all... ASC had the highest percentage of respondents in the western region and that means we get a brand new Ski-Doo snowmobile!

You want to know more about how this sled might become yours?  
Come to a membership meeting to learn more...

**WAY TO GO ASC MEMBERS!**  
Thanks to the great folks at AMDS and BRP for there support !



ASC would like to thank Alaska Communications Eagle River Office for there support in providing wireless service to the club during the Oxygen and Octane show.

**Interested in your business being listed here???**  
**Contact any board member or e-mail the newsletter manager at**  
[Newsletter@AnchorageSnowmobileClub.com](mailto:Newsletter@AnchorageSnowmobileClub.com)



## The Ride Leader...



Send in your stories from the trail, pictures (those help with fact or fiction) and we will share those here! You can e-mail us at [Newsletter@AnchorageSnowmobileClub.com](mailto:Newsletter@AnchorageSnowmobileClub.com)

# GET OUT AND RIDE!!!!

## What's in your pack? By Erik Burney—ASC Vice President

It's a question that often comes up amongst Alaskans when the talk turns to snowmachining in the backcountry, and that's a good thing I think. When we consider for a minute that we ride some of the most remote and challenging country anywhere, the potential consequences of being stranded and poorly equipped are sobering. The thing about Alaskan winters is they don't discriminate... whether you're a fresh-faced cheechako or a wizened sourdough, the cold can hurt or kill anyone who ventures out into it unprepared. And being prepared is what this piece is all about.

We all carry gear, tools and equipment in the event something goes wrong. Generally, when it comes to packing gear most snowmachiners prepare for an overnighter. To that effect the following list is offered as a starting point. Maybe you'll see something that you've never thought of before. Remember, the goal is to be ready. So carry what's important to you.

### IN THE BACKPACK

Spare goggles  
 Extra goggle strap (to replace QuikStrap for using goggles without helmet)  
 Leatherman tool  
 Knife  
 100' light rope  
 Roll of twine  
 First aid kit  
 Mini-stove and fuel  
 Aluminum shovel  
 Saw  
 Fire starter kit  
 Whistle  
 Mirror  
 Compass  
 GPS  
 Maps  
 Lighter / waterproof matches  
 Duct tape  
 Toilet paper  
 Emergency blanket / Space blanket  
 2ea. large trash bags

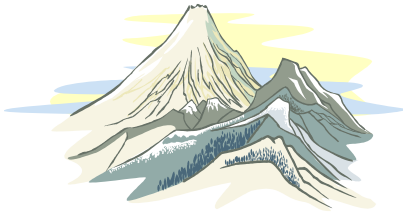
3' aluminum foil (folded into a small square)  
 Hand warmers  
 Avalanche beacon & probe  
 LED light  
 LED head lamp  
 Stocking cap  
 Extra long johns & socks

### ON THE SLED

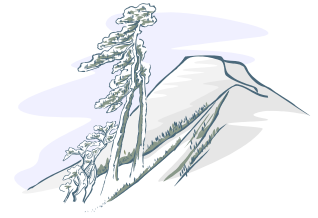
Snow bungee  
 Extra gas  
 Spare belt  
 Extra plugs  
 10' heavy rope  
 T-handle saw  
 Tool kit

### \*IN THE TOOL KIT (Adjusted for your machine)

Wrenches  
 Screw drivers  
 Pliers  
 Recoil rope or strap  
 Zip-ties  
 Mechanic's wire  
 Mechanic's gloves  
 Spare common nuts & bolts  
 Fasteners  
 4' fuel line



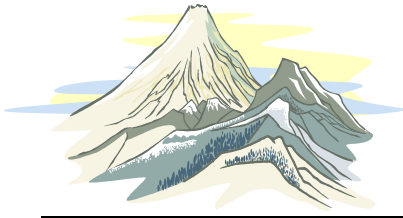
# Ride Schedule



Ride info for the 2011-2012 season.  
 Always check the ASC hotline or web page and facebook for up to date info.

## GET OUT AND RIDE !!!

Nov					
9		ASC Board Meeting	7:00 PM	ASC Staff	<a href="#">Click here for more info</a>
12	Fam	Maintenance Seminar Marita Sea and Ski Polaris	10 AM		<a href="#">Click here for more info</a>
16		General Membership Meeting	7:00 PM		IBEW Hall 3333 Denali St
Dec					
14		ASC Board Meeting	7:00 PM	ASC Staff	<a href="#">Click here for more info</a>
17	Adv	Intro to Deep Powder Riding	10 AM	Tim Cook	<a href="#">Click here for more info</a>
21		General Membership Meeting	7:00 PM		IBEW Hall 3333 Denali St
24					
31					
Jan					
7					
11		ASC Board Meeting	7:00 PM	ASC Staff	<a href="#">Click here for more info</a>
14					
18		General Membership Meeting	7:00 PM		IBEW Hall 3333 Denali St
21	Fam	South Denali	10 AM	Jack Grieco	<a href="#">Click here for more info</a>
27-30	Adv	<b>NEW</b> Kodiak <b>NEW</b> Ride is Full	Over Night Ride	Bill Leider	<a href="#">Click here for more info</a>
28					



# Ride Schedule



Feb					
4	Fam	Bunko Bump	10 AM	Jerry Siok	<a href="#">Click here for more info</a>
8		ASC Board Meeting	7:00 PM	ASC Staff	<a href="#">Click here for more info</a>
11-12	Fam	Eureka Lodge to Lake Louise Lodge	10 AM	Jack Grieco	<a href="#">Click here for more info</a>
15		General Membership Meeting	7:00 PM		IBEW Hall 3333 Denali St
18-20	Fam	Bentalit Ride is Full	Over Night Ride	Kurt Julsen	<a href="#">Click here for more info</a>
18-20	Adv	<b>NEW</b> Winter Lake <b>NEW</b>	Over Night Ride	Bill Leider	<a href="#">Click here for more info</a>
24-26	Fam	Bentalit Ride is Full	Over Night Ride	Kurt Julsen	<a href="#">Click here for more info</a>
25					
Mar					
3	Int	Nelchina Glacier	10 AM	Jack Grieco	<a href="#">Click here for more info</a>
3-5	Fam	Bentalit Ride is Full	Over Night Ride	Kurt Julsen	<a href="#">Click here for more info</a>
8-11	Fam	Susitna River Lodge Ride is Full	Over Night Ride	Gary Brown	<a href="#">Click here for more info</a>
9-11	Adv	<b>NEW</b> Winter Lake <b>NEW</b>	Over Night Ride	Bill Leider	<a href="#">Click here for more info</a>
10					
14		ASC Board Meeting	7:00 PM	ASC Staff	<a href="#">Click here for more info</a>
17	Fam	Kanikula Glacier	10 AM	Jerry Siok	<a href="#">Click here for more info</a>
21		General Membership Meeting	7:00 PM		IBEW Hall 3333 Denali St
24					
31					
Apr					
7					
11		ASC Board Meeting	7:00 PM	7:00 PM	<a href="#">Click here for more info</a>
14					
21					

# Schedule of Events

for the most current info check on-line at  
[www.anchoragesnowmobileclub.com](http://www.anchoragesnowmobileclub.com)  
Or call the HOT LINE at (907)566-0272

The schedule for the 2011-2012 season will be updated after the general membership meeting on 21 September. Look for updates on-line and in you next newsletter!



*ASC*  
*Raffle Madness*

*\$20 per ticket*

## GRAND PRIZE

**2011 SKI-DOO SUMMIT EVEREST  
154 800R E-TEC**

**2ND PRIZE - \$500.00 CASH!**

**3RD PRIZE—\$200.00 CASH!**



Sled may be different than one pictured



**Drawing for the prizes will take place on 21 December at the general membership meeting !**

## Club Meeting Highlights

General membership meetings are the 3rd Wednesday of each month during September-March.

Meetings are held at the IBEW hall—3333 Denali St in Anchorage starts at 7pm

NEXT MEETING

16 November 2011

[www.anchoragesnowmobileclub.com](http://www.anchoragesnowmobileclub.com)



## We Have A Winner!



We gave away a \$200.00 gift card to Sportsman's Warehouse at the September meeting— Mike Murphy was the winner!

At October's meeting a gift certificate for \$200.00 to the sled dealer of choice was won by Ron Lurk!

Be our next winner !

Attend a general membership meeting !



[www.anchoragesnowmobileclub.com](http://www.anchoragesnowmobileclub.com)

**Anchorage Snowmobile Club**  
**PO Box 232196**  
**Anchorage, AK 99523-2196**  
**(907)566-0272**

ADDRESS SERVICE REQUESTED



The Anchorage Snowmobile Club would like to thank the IBEW for allowing us the use of their facilities for our meetings during the 2010-2011 season.

The IBEW has supported us with this generous donation for many years and as this season ends and a new one awaits we say,

**THANK YOU IBEW!!**

The Club recognizes the support of all our business members and advertisers listed on page 3. We ask that you remember them when a need arises for goods and services they provide. **PRINT THAT PAGE** and keep it handy for easy reference.